

Nurturing the Talents and Meeting the Needs of Refugee Students

Presented by Julie Kasper

School Coordinator for Refugees, Tucson / CENTER Director

jkasper@refugeefocus.org

When you think of a refugee student, who (and what) comes to mind?

What characteristics do you imagine?

What needs do you think of?

What talents or assets do you picture this
young person possessing?

Refugee Defined

A refugee is a person outside his or her own country who is unable or unwilling to return because of a well-founded fear of persecution on account of:



Race



Religion



Nationality



Social Group



Political Opinion

What does it mean to be a refugee?

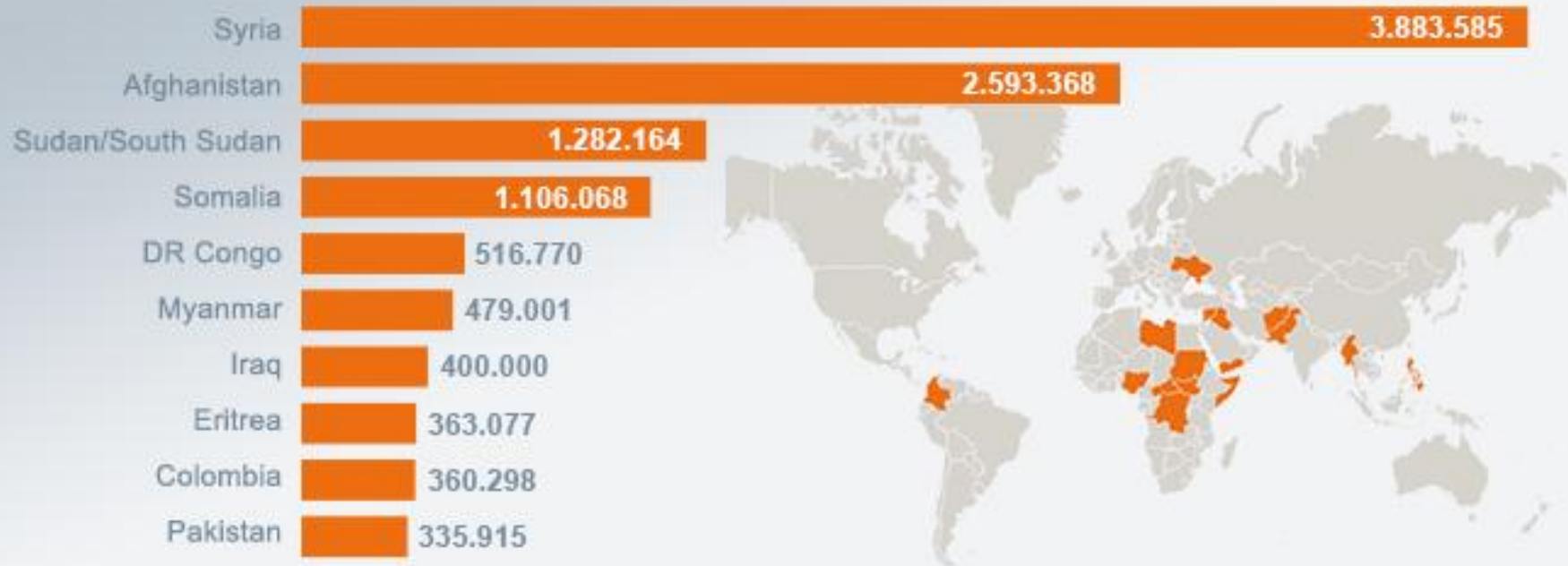


What if people of your faith or ethnic group were being singled out, kidnapped, tortured, and killed?

What would you do right now if explosions began rocking the city, coming closer and closer?

The 10 biggest crises worldwide

Total number of refugees end of 2014



Source: UNHCR

© DW

WHERE REFUGEES CAME FROM IN 2015



- Near east/
South Asia **35.2%**
- Africa **31.7%**
- East Asia **26.7%**
- Europe **3.4%**
- Latin America/
Caribbean **3%**

SOURCES: Refugee Processing Center,
State Department

Frank Pompa and Jim Sargent, USA TODAY



☆ Ankara

TURKEY

1,718,147

**SYRIAN ARAB
REPUBLIC**

LEBANON

☆ Beirut

1,187,407

IRAQ

244,731

☆ Baghdad

EGYPT

☆ Cairo

133,516

JORDAN

626,357

Amman

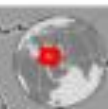
3,934,213

Refugees and those awaiting registration.
Total includes 24,055 in North Africa.
As at 18th Mar 2015

Syrian Refugee Population Density ▲ Refugee Camp

- Less than 500
- 500- 5,000
- 5,000- 15,000
- 15,000 - 45,000
- 45,000 - 135,000
- 135,000 - 415,000

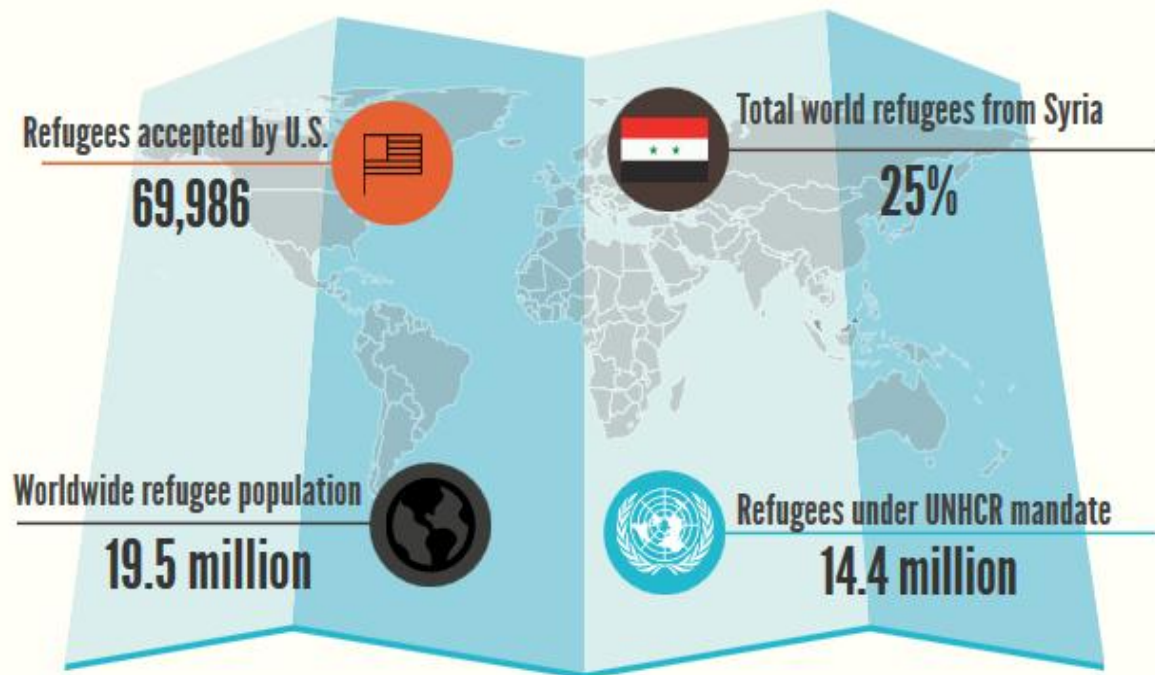
10km



The boundaries and names shown and the designations used on this map do not imply official endorsement or acceptance by the United Nations.

Sources: <http://data.unhcr.org/>

QUICK GUIDE TO 2014 STATISTICS ON REFUGEES

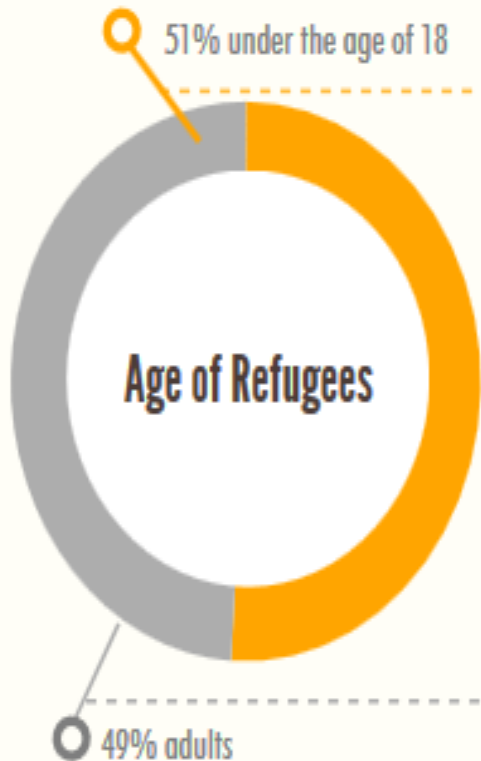


86% refugees in developing countries

42,500 people leave their homes per day because of conflict



<http://arizonasonoranewsservice.com/despite-rhetoric-refugees-are-a-humanitarian-concern/>



Typically, families have priority.

- If a child reaches 18 years of age during process, they will begin a new file individually.

Less common for "fighting age" males to be recommended.



Possible reasons for individual male recommendations.

- Prior service with U.S. forces
- Medical reasons
- LGBT concerns

45-60 million displaced people (including registered refugees) worldwide today

(UNHCR active case numbers = approx. 14 million)

60-80% are women & children

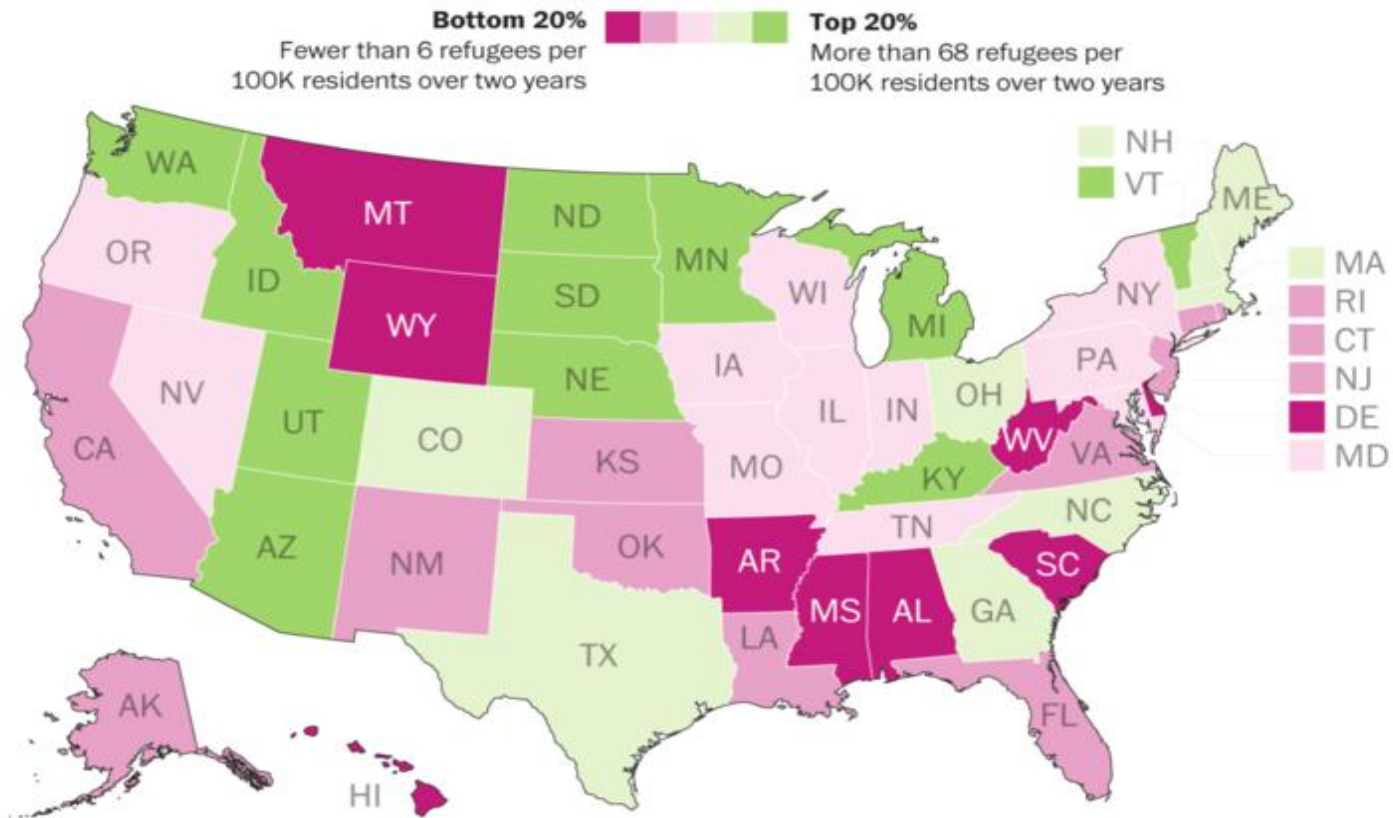
(51% are under 18 years old)

5-35% are rape and/or torture survivors

only **1%** worldwide will be resettled to a 3rd country like the USA, Canada, Germany...

The most and least welcoming states for refugees

Relative to their own populations, North and South Dakota have settled the most refugees in recent years, while Southern states have settled some of the fewest. (Data from fiscal years 2013 and 2014)



WAPO.ST/**WONKBLOG**

SOURCE: U.S. Office of Refugee Resettlement

Top Six Origin Countries in Arizona



Democratic
Republic of Congo



Iraq



Somalia



Burma



Eritrea



Cuba

powered by

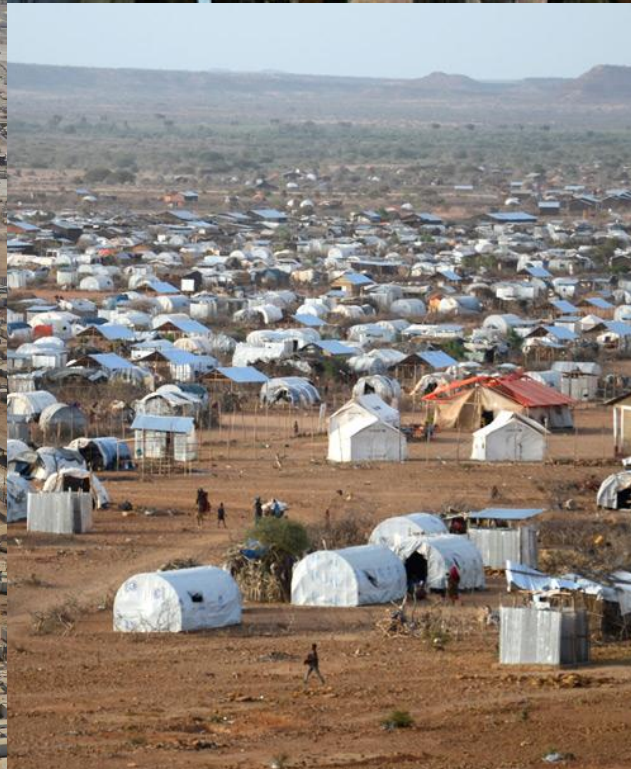


Piktochart
make information beautiful

Pima County's Top Resettlement Countries of Origin this year are:

- Democratic Republic of the Congo
- Somalia
- Iraq
- Burundi
- Eritrea

Also, we have welcomed a number of individuals and families from Sudan, Cuba, Ethiopia, Rwanda, Afghanistan, and Syria



A refugee's future? Waiting...



What future do refugees face?

1) Refugees flee to a camp & wait for UNHCR to give them refugee status. Sometimes they illegally enter neighboring cities and can choose to approach the UNHCR office in that location.

2) From there, UNHCR looks for “durable” solutions to the crisis.

The average wait time is 10 years.

DURABLE SOLUTIONS



Voluntary
Repatriation

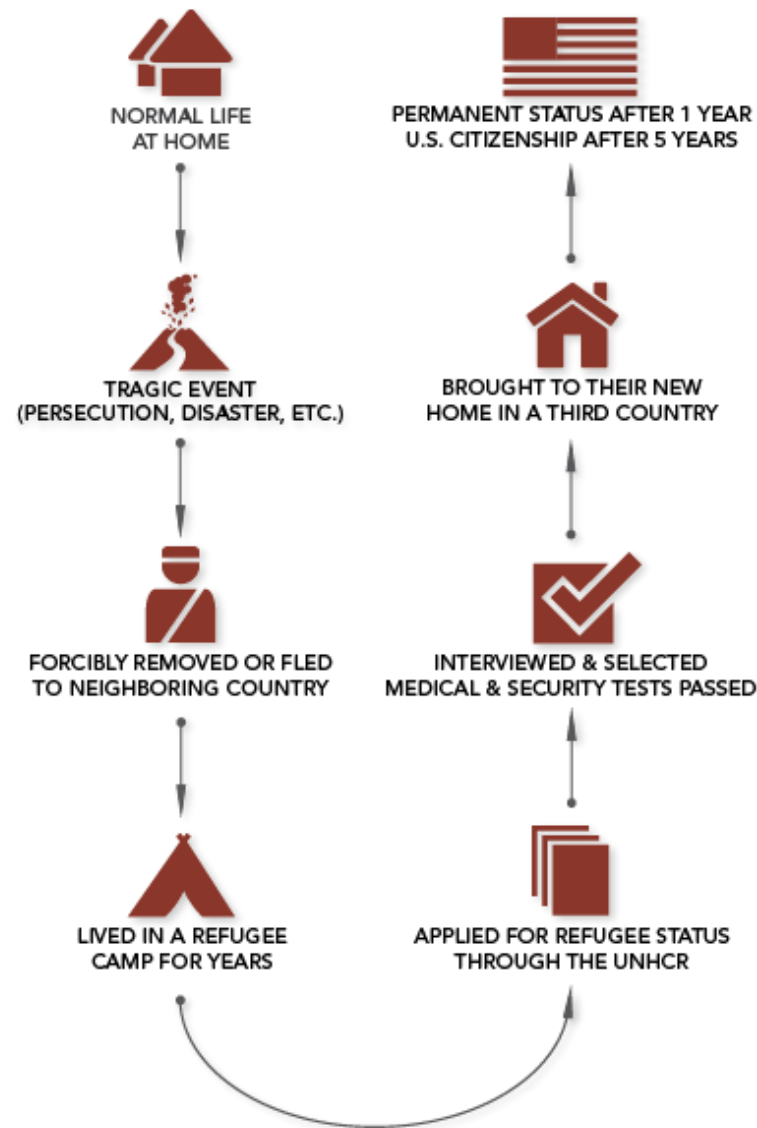


Local
Integration



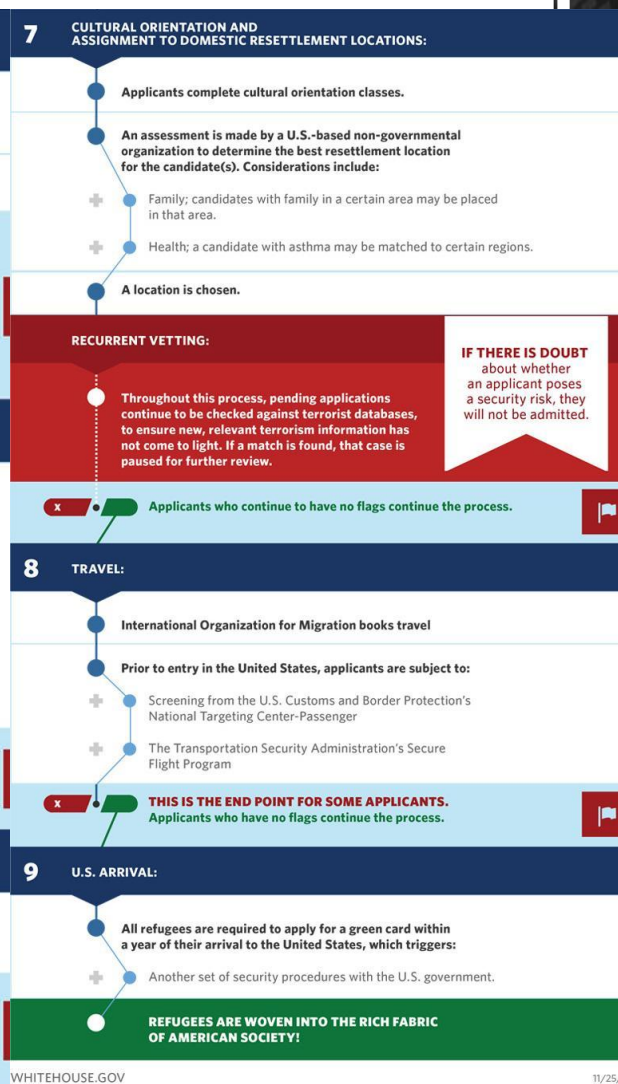
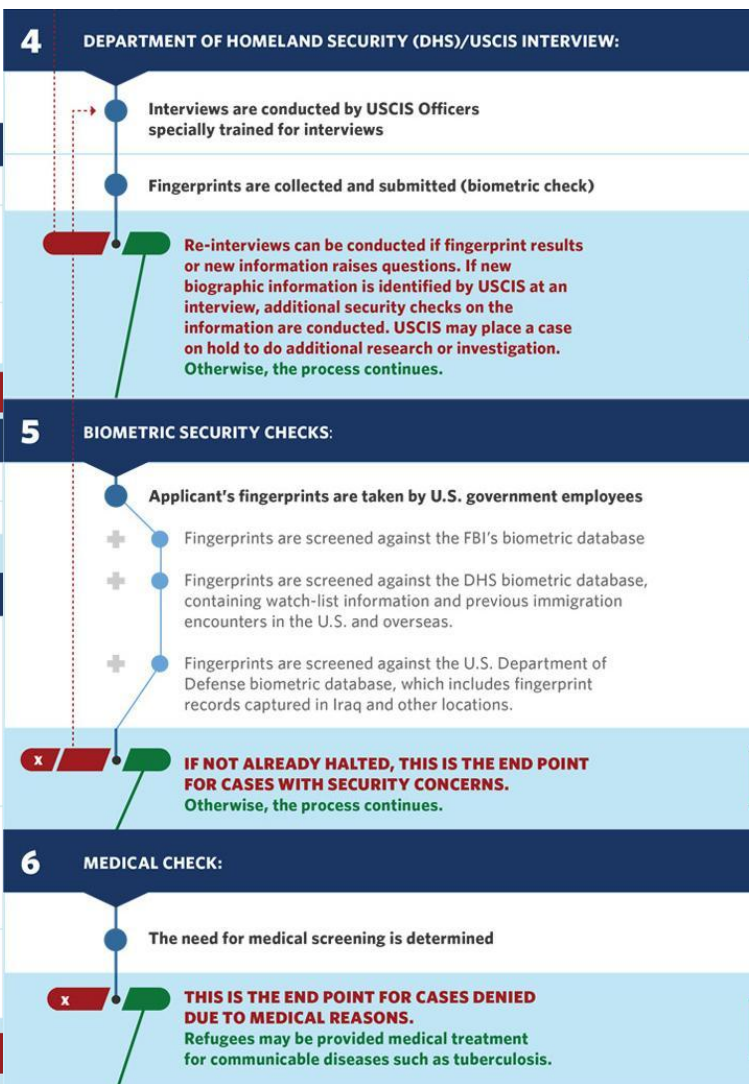
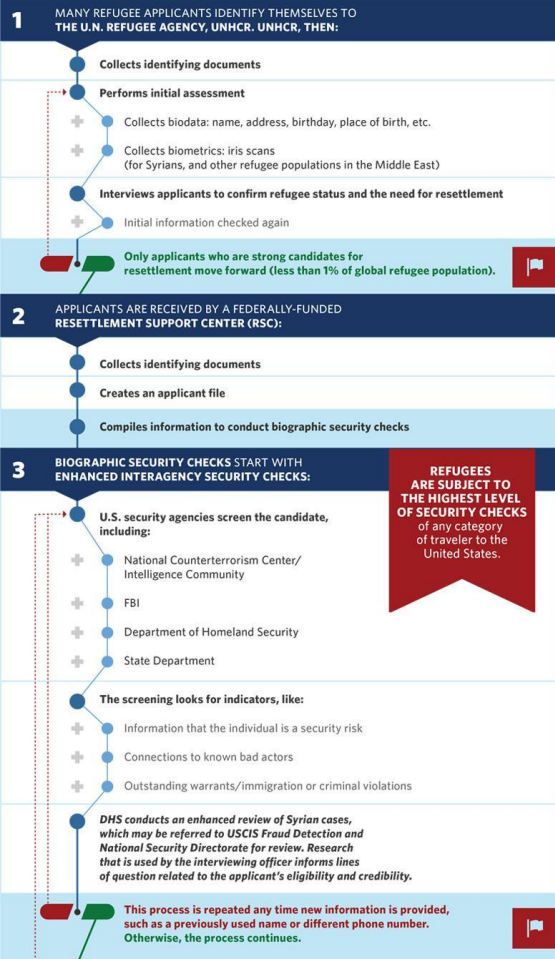
Third Country
Resettlement

TRAJECTORY OF A REFUGEE SETTLING IN AMERICA

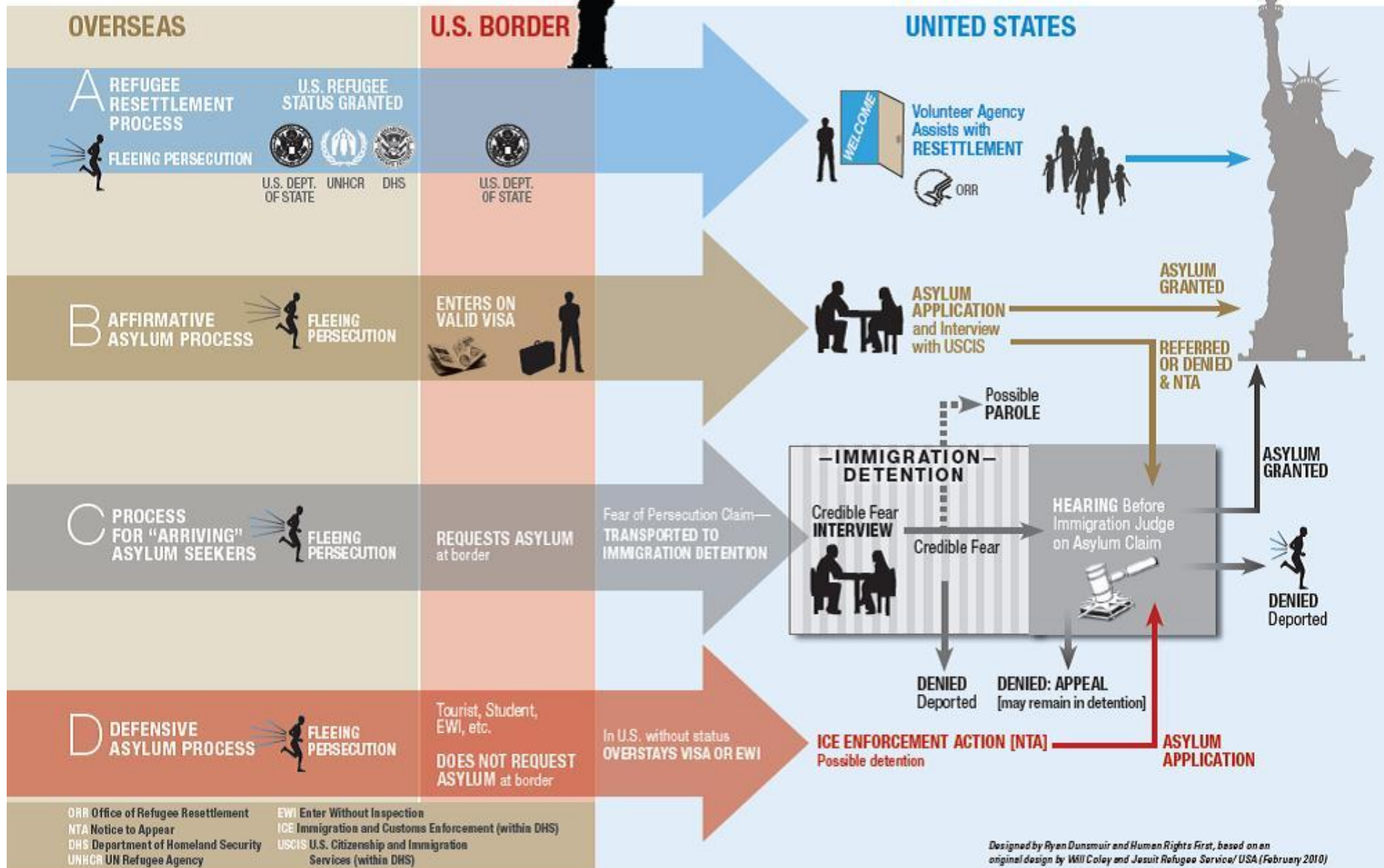


THE SCREENING PROCESS

FOR REFUGEE ENTRY INTO THE UNITED STATES



How Refugees Get to the U.S.



Tucson Resettlement Agencies



Catholic Community Services



Refugee Focus

(a division of Lutheran Social Services of the Southwest)



International Rescue Committee

Resettlement in Tucson

Common challenges for new arrivals:

- Learning the language
- Getting around Tucson
- Securing employment
- Living in poverty
- Navigating the healthcare system and other government bureaucracies
- Adapting to American culture (norms, time, individualism, new school systems...)

Federal Resettlement Goal: Self-sufficiency within 6 months



Common challenges for refugee youth:

- Adjustment to a new educational system
- Limited or fragmented educational past
- Language acquisition
- Cultural dislocation
- Cultural misunderstandings
- Competing cultural values & norms
- Identity “crisis” (beyond typical adolescent searching & identity formation)
- Intergenerational conflict/role reversals
- Discrimination
- Past trauma/grief
- Living in poverty

You Can Expect...

Refugees who speak limited English

Refugees who speak excellent English

A family with limited formal education

A family that is highly skilled and educated

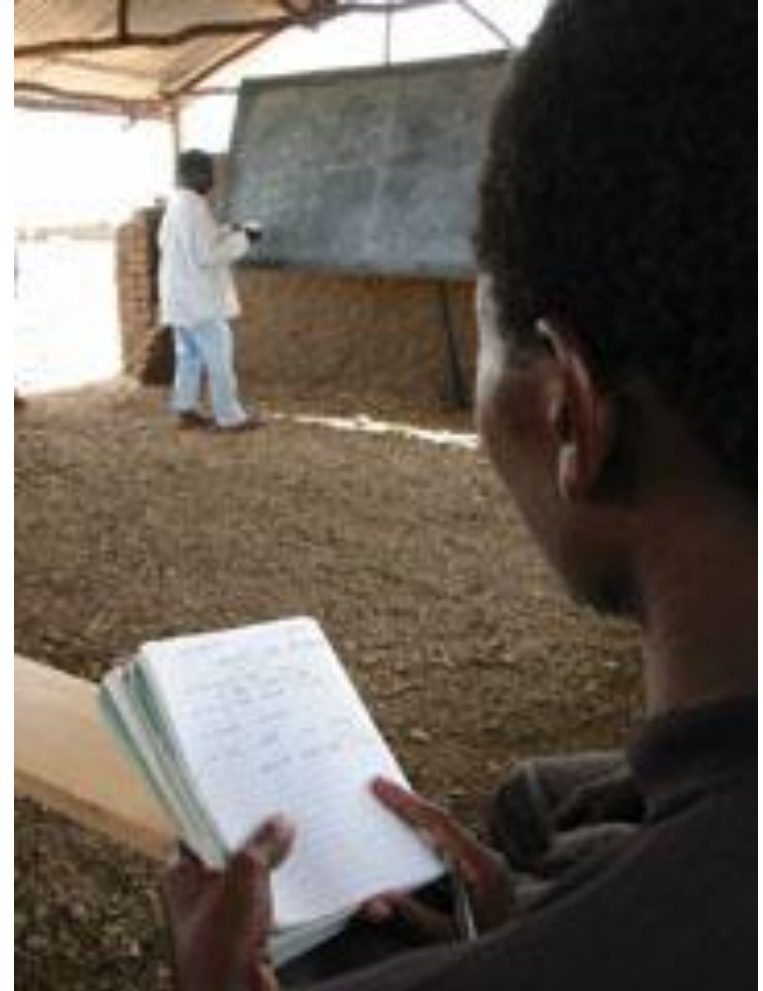
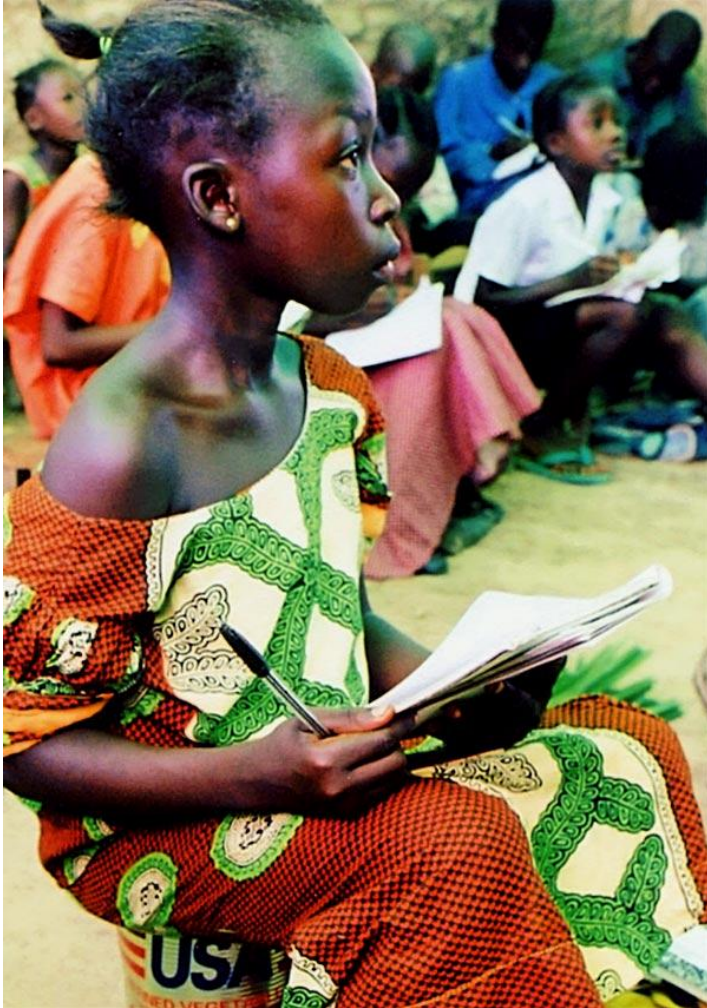
Students that seem conservative, traditional, or “foreign”

Students that seem very liberal or “westernized”

Education in refugee camps varies greatly...

- Many times only primary and middle school is available in the camps.
- When it is, there can be more than 100 students in the class.
- Boys are often more likely to have been sent to school.

Education in refugee camps varies...



Some Regions of Africa



Afghan Children



**Karenni students in a refugee
camp school in Thailand**



Dadaab, Kenya



Kakuma Camp, Kenya



Private Primary School, Tanzania



Private Primary School, Cameroon



**Congolese refugee students in
Sudan**



**Congolese refugee students in
Rwanda**



Education in the United States



**So, what can we do as caring, skilled
educators and community partners
to help all of our students and
families transition and find success
here in Tucson, Arizona?**

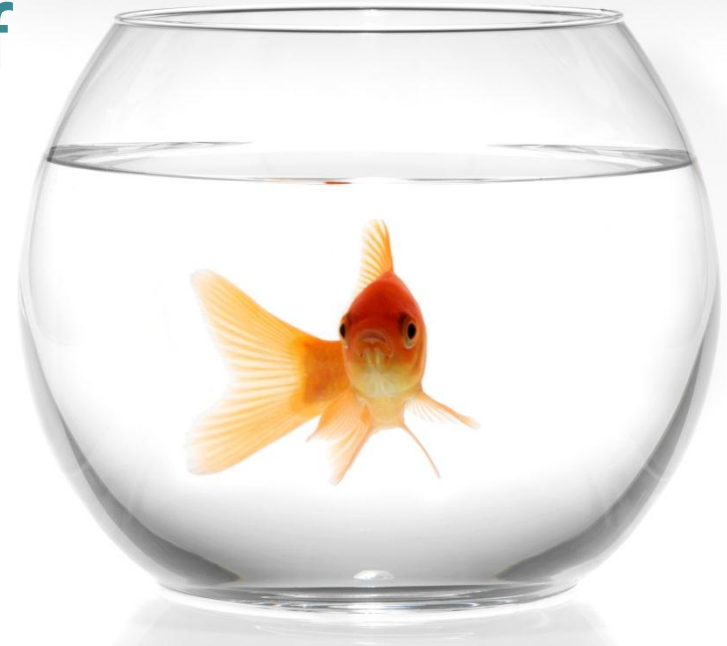


Try Integrated Content & Language Learning

- Whatever you are teaching or doing, make the language involved in that activity explicit
 - The ways of thinking specific to a discipline or community of practice
 - The tools necessary for the student and family to participate in the activity

Integrated Content & Language Learning

- ELLs cannot see (and most certainly cannot learn) the language of your field unless it is taught explicitly



Engage the Family

- Getting the whole family involved increases the chances of success for each student in our schools
- Family engagement can look and feel a variety of ways...not just the traditional “parent-teacher conference”

Approach the work from an ASSETS-BASED perspective:

- Take time to discover the interests, talents, skills that your students bring to the classroom & build upon those
- Recognize the resilience, perseverance, and drive of each refugee we meet here in Tucson
- Be thoughtful about the language you use in relation to “refugees”

Position Yourself Honestly:

- Develop Self-Awareness
 - Be aware of your worldview, values, and behaviors
 - Be aware of your prejudices
- Develop Awareness of Different Cultures
 - Listen & Learn & Appreciate
- ***Connect, connect, connect!***



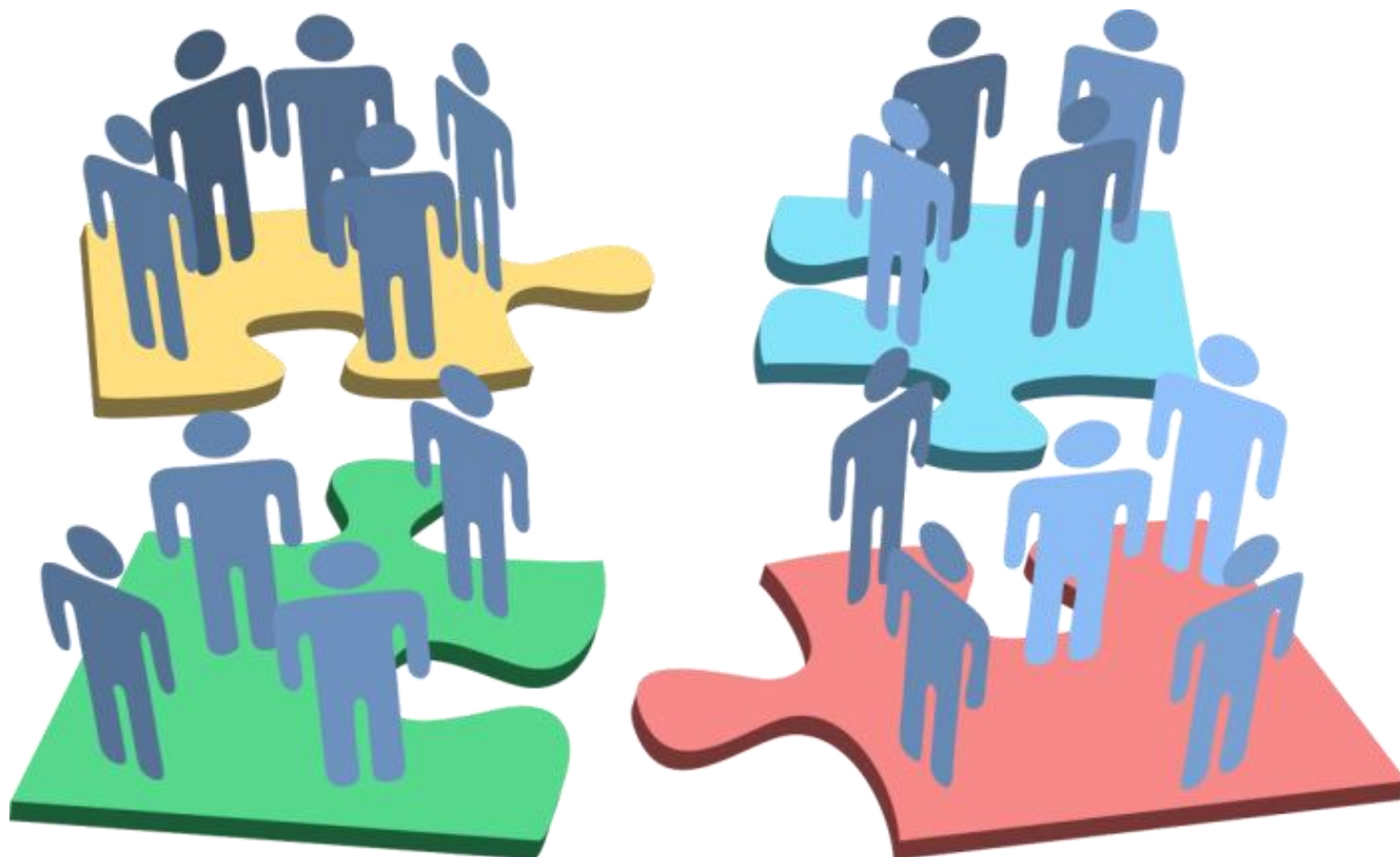
CENTER

Collaborative Engagement
to Nurture Talent and
Educate Responsively

a program of Lutheran Social Services of the Southwest

Supporting Refugee & Immigrant Students

Serving as a hub and catalyst for the
best in educational practice and youth
development for
Tucson's diverse and globally conscious
learners, their parents, and the
teachers, school and agency staff,
volunteers, and
other community partners who work
with them across the city.





Programs for 12-24 year olds:

- tutoring & mentoring
- drop in study space and computer lab
- Finding Voice Project
- Friends of the World club
- other club & extracurricular activities
- career exploration and readiness workshops
- college information workshops
- field trips and community service projects
- help with school paperwork & with finding other supports a student/family may need









CENTER welcomes students, families, teachers, & staff from:



Catholic Community Services

Refugee Focus



International Rescue Committee



Tucson Unified School District



Amphitheater School District



Sunnyside Unified School District

Other Community Organizations & Schools



PimaCommunityCollege